



- 4.3-ounce, 100% combed ring spun cotton, 32 singles
- 90/10 cotton/polyester, 32 singles (Heather Gray)
- Double binding at neck and armholes
- Tear-away label
- Side seamed

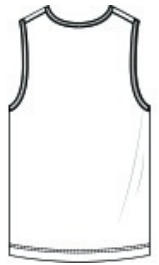
**CARE INSTRUCTIONS**

Machine Wash Cold. Only Non-Chlorine Bleach When Needed.

Tumble Dry Low. Do Not Iron Decoration.



front



back

**HOW TO MEASURE**



**CHEST WIDTH**

Measure under the arm and around the fullest part of the chest with arms down, keeping tape horizontal.

**SIZE CHART**

	XS	S	M	L	XL	2XL
Chest	33-35	35-38	38-41	43-44	45-48	48-52

**COLOR INFORMATION**

Please note: PMS code information is shown only when an exact match is available.



Black



Black/ Heather Gray



Heather Gray



Heavy Metal



Midnight Navy



Red



Royal



White